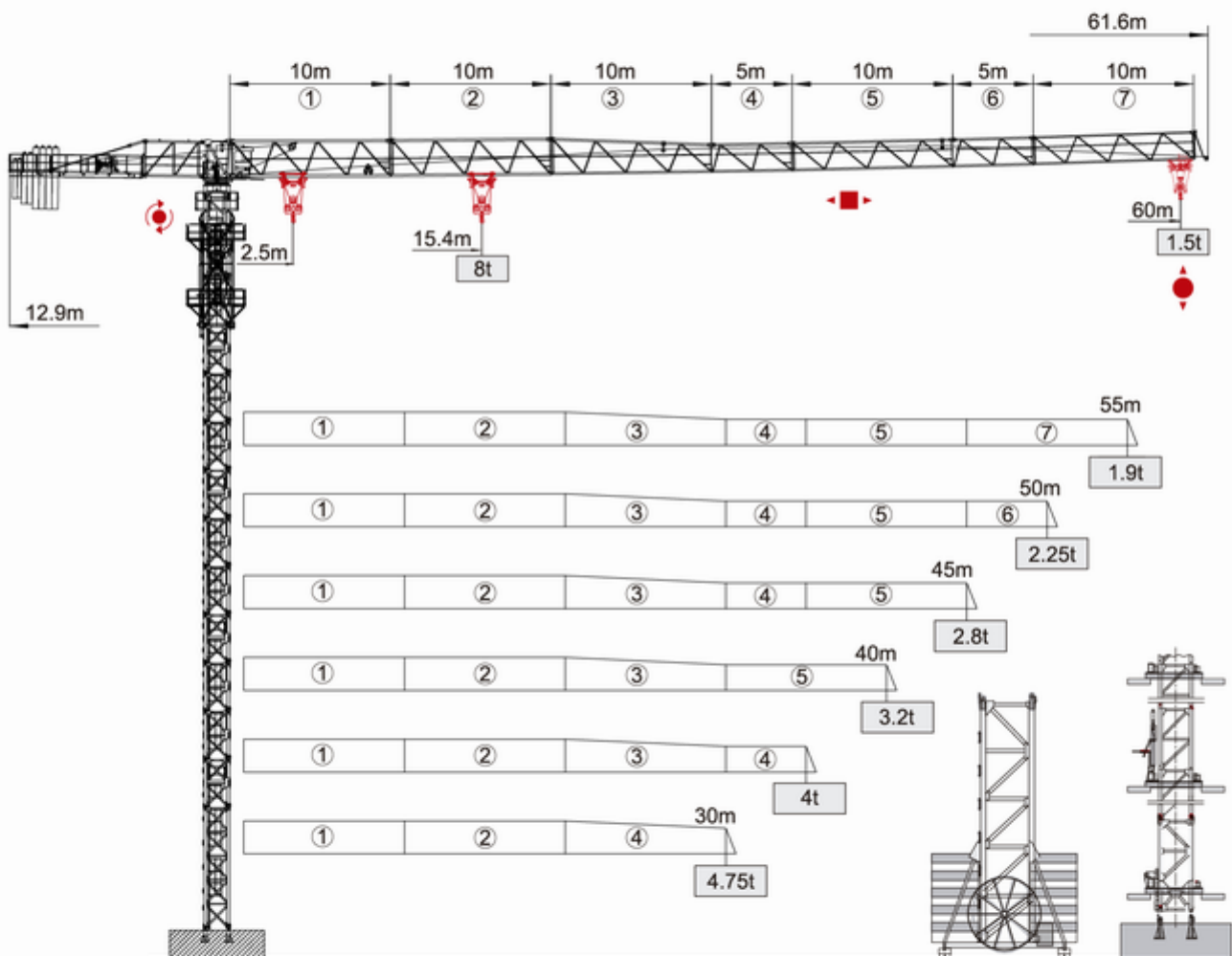
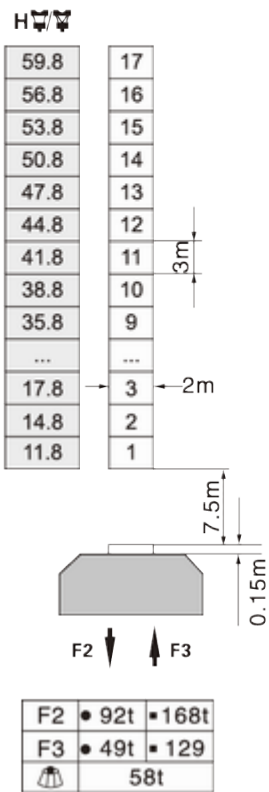


QTP6015

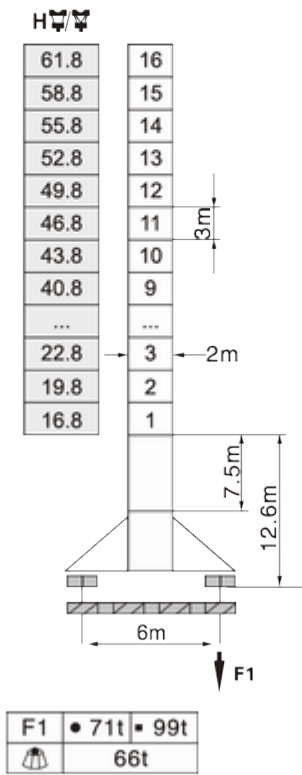


Mast 2m x 2m

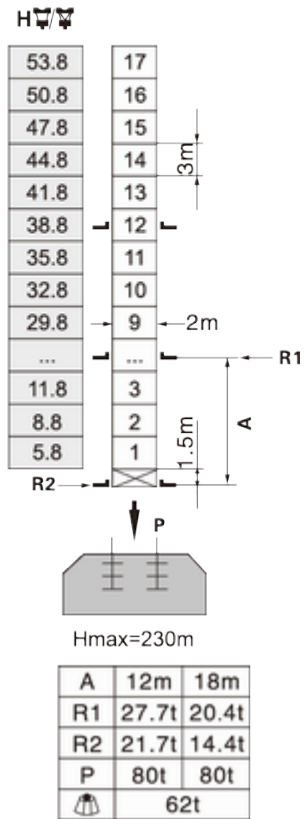
Stationary



Traveling

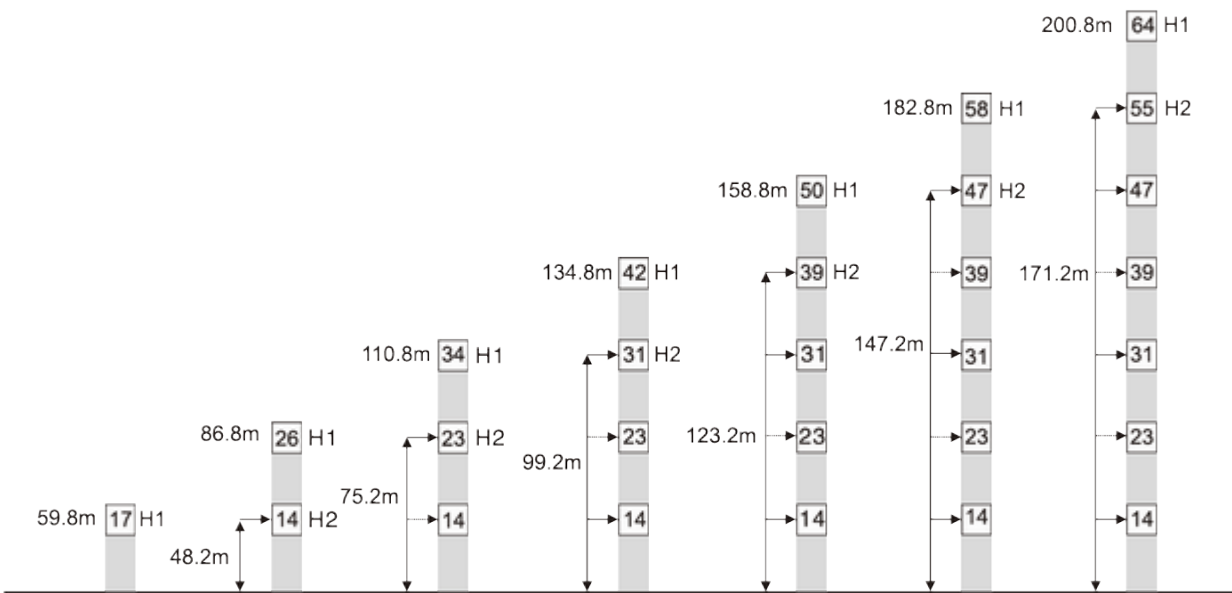


Inner climbing



- In service F= Reactions
- Out of service Total weight without load and counter weight

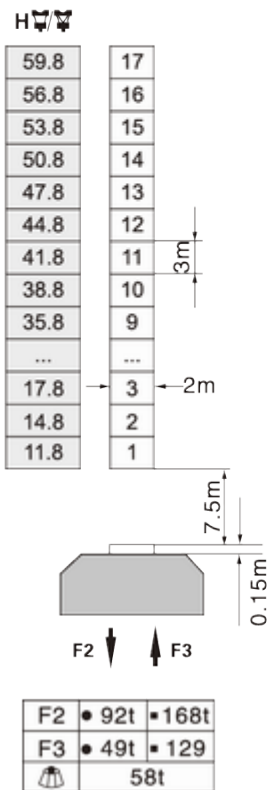
Anchorage



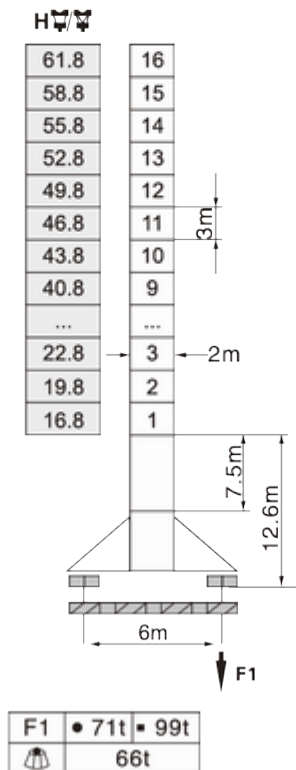
H1— Height under hook
H2— Height of anchorage frame to the ground
 > 200.8m Consult us

Mast 2m x 2m

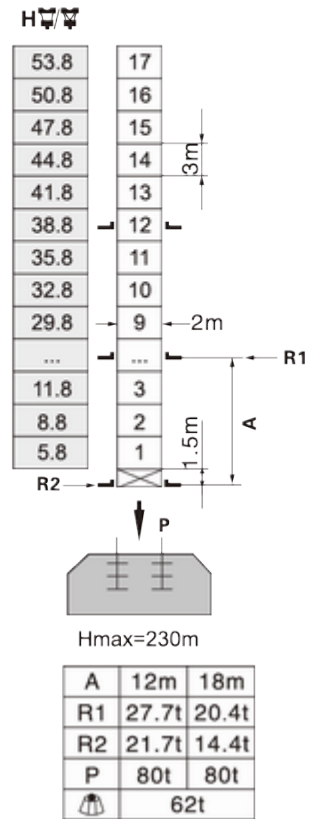
Stationary



Traveling

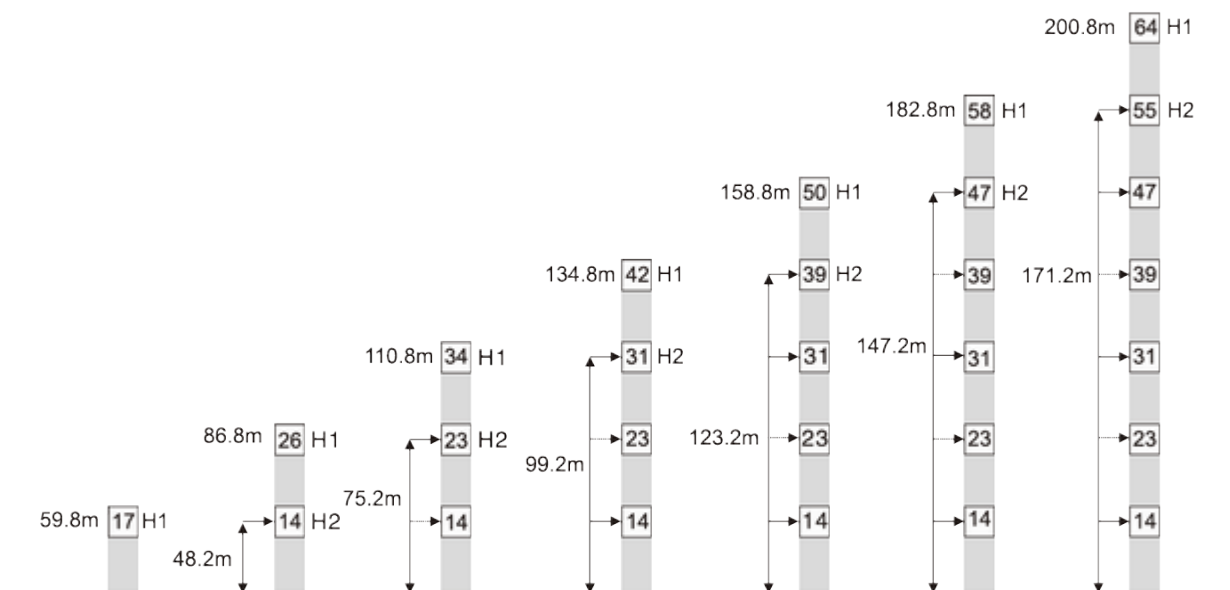


Inner climbing



- In service F= Reactions
- Out of service Total weight without load and counter weight

Anchorage






- H1— Height under hook
H2— Height of anchorage frame to the ground
 > 200.8m Consult us








Load Diagrams

		2.5-18.3		20	25	30	35	40	45	2.25	1.9	1.5
Jib (m)	Fall	Range (m)	2.5-15.4	20	25	30	35	40	45	50	55	60
60	IV	Load (t)	8	5.91	4.54	3.63	2.99	2.52	2.15	1.86	1.62	1.42
	II		4				3.71	3.07	2.6	2.23	1.94	1.7
Jib (m)	Fall	Range (m)	2.5-16.6	20	25	30	35	40	45	50	55	
55	IV	Load (t)	8	6.48	4.99	4.01	3.31	2.8	2.4	2.08	1.82	
	II		4				3.39	2.88	2.48	2.16	1.9	
Jib (m)	Fall	Range (m)	2.5-72.2	20	25	30	35	40	45	50		
50	IV	Load (t)	8	6.71	5.17	4.16	3.44	2.91	2.5	2.17		
	II		4				3.52	2.99	2.58	2.25		
Jib (m)	Fall	Range (m)	2.5-18.3	20	25	30	35	40	45			
45	IV	Load (t)	8	7.22	5.57	4.49	3.73	3.16	2.72			
	II		4				3.81	3.24	2.8			
Jib (m)	Fall	Range (m)	2.5-18.7	20	25	30	35	40				
40	IV	Load (t)	8	7.13	5.51	4.44	3.68	3.12				
	II		4				3.76	3.2				
Jib (m)	Fall	Range (m)	2.5-19	20	25	30	35					
	IV	Load (t)	8	7.56	5.84	4.72	3.92					
	II		4									
Jib (m)	Fall	Range (m)	2.5-19.1	20	25	30						
30	IV	Load (t)	8	7.61	5.88	4.75						
	II		4									

Counter Weight

		3100kg	2500kg	1300kg	 kg
60m	12.9m	4	2	2	20000
55m	12.9m	4	2	1	187000
50m	12.9m	4	1	2	17500
45m	12.9m	3	2	2	16900
40m	12.9m	3	1	2	14400
35m	12.9m	3	1	1	13100
30m	12.9m	3	1	0	11800

机构特性 Mechanisms

Name	Model						Power
Hoisting 	40LVF20	m/min	t	m/min	t	620m Inverter Control	30Kw
		0-40	4	0-20	8		
		0-80	2	0-40	4		
Trolleying 	40BPX65	m/min	0-56		Inverter Control	4Kw	
Slewing 	40BPX65	r/min	0-0.7			2 × 95Nm	
	RVF95	r/min	0-0.7		Inverter Control	2 × 5.5Kw	
Traveling 	14TVF	m/min	0-25		Inverter Control	2 × 5.2Kw	
/Power Supply				380V/50Hz 440V/60Hz (± 5%)			
/Necessary Power				55KVA/70KVA (traveling)			

Specifications and data is not legally binding.

For any technical information, please refer to the corresponding instructions.

